

Accommodation for UJOP Charles University students

- prepayment - 300 EUR
- refundable deposit - 429 EUR

This applies to ÚJOP Charles University students in all types of courses and programmes, except summer schools. For detailed prices and payment terms for the 2026/2027 academic year, see the table on page 2.

Prague - Krystal

- average price per month - from 448 EUR

Centrum Krystal, a university mini-campus, combines ultimate convenience with modern comfort. Stylish, well-equipped rooms ensure a **high standard of living**. With accommodation, dining, and modern classrooms **all in one building**, students can transition seamlessly from their rooms to classes without stepping outside. **Ideally located** just 15 minutes by public transport from Václav Havel Airport and Prague's historical centre, the campus is both accessible and functional. Nearby, the Divoká Šárka nature reserve offers breathtaking landscapes, swimming spots, and hiking trails.



Prague - Hostivar

- average price per month - from 320 EUR

Accommodation at the student campus in Prague Hostivař is **accessible from the city centre in just 15 minutes by city train**. It is located in walking distance from the Charles University Sports Centre, the forest park and Hostivař lake.

Choose a single or double room with private bathroom, shower and fridge. In Hostivař there are 10 rooms on each floor, with a shared kitchen.



Institute for Language
and Preparatory Studies
Charles University



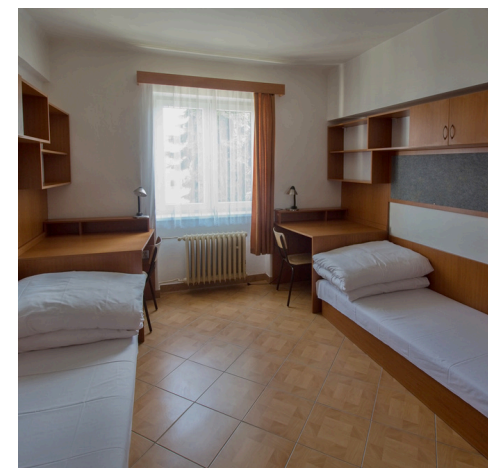
Podebrady

- average price per month - from 242 EUR

A charming spa town with its own healing spring, many restaurants and sports facilities, **just 50 minutes by train from Prague**. You will study in a castle overlooking the river Elbe, with a history going back to the 12th century.

You will stay in a double bedroom dormitory with Eduroam - pan-European wifi, fridge and either en-suite or shared bathrooms. Shared common rooms are available on each floor.

The dormitories are just a few minutes' walk from the castle where you will study.



Prague - Vysehrad

- average price per month - from 312 EUR

Several living rooms in the UJOP Charles University management building are intended primarily **for the long-term accommodation of postgraduate students from Charles University** and those coming for long-term internships at UJOP. Both single and double accommodations are available.

The building is located in the historical centre of Prague near Vyšehrad.



Accommodation price list for UJOP Charles University students

academic year 2026/2027



Institute for Language
and Preparatory Studies
Charles University

Payment and Reservation Policy

1. Reservation Prepayment

- To secure your booking, you must prepay **6,990 CZK / 300 EUR**.
- This prepayment covers your accommodation starting from your arrival until the amount is fully used.

2. Refundable Security Deposit

- Upon arrival, a refundable security deposit of **10,000 CZK / 429 EUR** is required.
- This deposit covers potential damage to room furnishings or shared facilities caused by you or your guests.
- For details on the refund policy, refer to the accommodation contract under the section **Accommodation Terms and Conditions**.

3. Further Payments

- Once the reservation prepayment is exhausted, additional payments can be made directly at the study centre via **bank transfer, card, or cash**.

4. Discounts

- Discounts apply if you pay for **120 or more days** in advance. For detailed pricing, refer to the table below.

5. Cancellation Policy

- Cancellations made **on or before August 31** will incur a **50% cancellation fee** from the reservation prepayment.

Place of accommodation	Dormitory	Accommodation standard		Prepayment (*)		Basic price (**)	Discounted price (**)		Average price in EUR (***) per month	
				reservation fee and refundable security deposit		when paying for up to 119 days	when paying for 120 – 239 days	when paying for 240 and more days		
		Set-up	Bathroom	Accommodation prepayment	Refundable security deposit	Price / night / a bed	Price / night / a bed	Price / night / a bed	from (discounted price)	to (basic price)
Prague - Krystal	-	2-bed	en suite	6 990 CZK (300 EUR)	10 000 CZK (429 EUR)	372 CZK	353 CZK	343 CZK	448 EUR	486 EUR
	-	1-bed (****)	en suite			511 CZK	491 CZK	480 CZK	628 EUR	669 EUR
Prague - Hostivar	building no. 7	2-bed	en suite	6 990 CZK (300 EUR)	10 000 CZK (429 EUR)	272 CZK	254 CZK	245 CZK	320 EUR	356 EUR
	building no. 7	1-bed	en suite			372 CZK	353 CZK	343 CZK	448 EUR	486 EUR
	building no. 3	2-bed	en suite			299 CZK	280 CZK	271 CZK	354 EUR	391 EUR
	building no. 3	1-bed	en suite			412 CZK	392 CZK	382 CZK	500 EUR	539 EUR
Podebrady	Dormitory I	2-bed	shared	6 990 CZK (300 EUR)	10 000 CZK (429 EUR)	212 CZK	189 CZK	185 CZK	242 EUR	277 EUR
	Dormitory I	3-bed	shared			212 CZK	189 CZK	185 CZK	242 EUR	277 EUR
	Dormitory I	4-bed	shared			212 CZK	189 CZK	185 CZK	242 EUR	277 EUR
	Hotel House	2-bed	en suite			259 CZK	235 CZK	232 CZK	304 EUR	339 EUR
	Hotel House	3-bed	en suite			259 CZK	235 CZK	232 CZK	304 EUR	339 EUR
	Hotel House	4-bed	en suite			259 CZK	235 CZK	232 CZK	304 EUR	339 EUR
Prague - Vysehrad	-	2-bed	en suite	6 990 CZK (300 EUR)	10 000 CZK (429 EUR)	372 CZK	353 CZK	343 CZK	448 EUR	486 EUR
	-	2-bed	shared			266 CZK	247 CZK	239 CZK	312 EUR	348 EUR
	-	1-bed	en suite			551 CZK	530 CZK	519 CZK	679 EUR	721 EUR
	-	apartment	en suite			743 CZK	715 CZK	699 CZK	915 EUR	972 EUR

(*) Details about the return of the security deposit can be found in Section IV, Payment, of the Accommodation Contract.

(**) Accommodation payments are always for full months.

(***) Payments are made in Czech crowns, and the prices in euros are for reference only, calculated at UJOP internal exchange rate.

(****) A twin room can be occupied by one person if there is available capacity.